

A6 Pressure Relief Valve

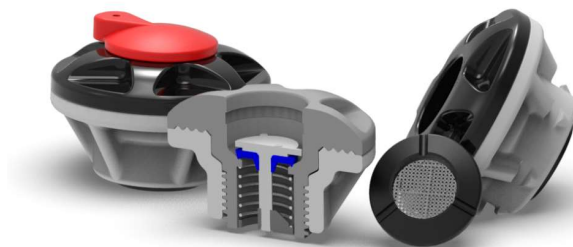
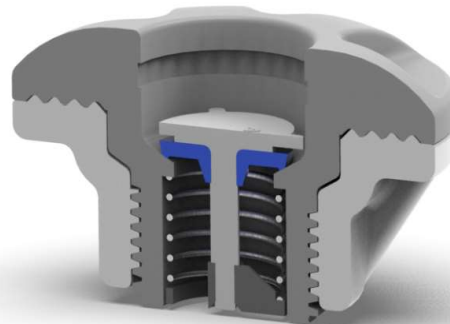
The A6 Pressure Relief Valve is ideal for any application where compactness and reliability are critical. The opening and closing pressures are accurately pre-set and repeatable.

A6 Key attributes and benefits:

- Protects the structure from over inflation and excess pressure due to solar heat.
- Approved to ISO 9650 and ISO 15738 as a transfer valve.
- Type Approval Certificate available on request
- Smooth, low profile. Rugged and reliable.
- Materials have high UV resistance.
- 100% tested for opening and closing pressures.
- Information on range of pressure settings is available on our website
- Rapid installation with clamp fitting.
- Operating temperature: -30°C to +65 °C.



- The valve is available in grey, black or white.
- Filter caps are available to stop debris entering the valve, without affecting the pressure relief function.
- A secondary seal plug is available for test purposes (prevents pressure relief function from working)



Contact Details:

Leaffield Marine Ltd.,
9 Atworth Business Park,
Atworth, Wiltshire, United Kingdom
SN12 8SB

Tel: +44 (0)1225 899550
Email: sales@leaffieldmarine.co.uk
Website: www.leaffieldmarine.co.uk

ISO 9001 Company

Leaffield
Marine

M-08-CI-A6-02 Rev 03