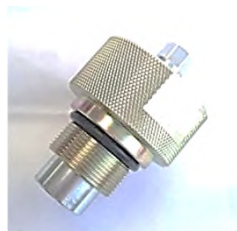


# Gas Inflation System Torsional Tooling

GIST: widely used on SOLAS life-rafts, Marine Evacuation systems and in the leisure life-raft market due to its high flow and ruggedness.



**GIST Filling Tool**  
To fit, lift and close Break Stem Seal assembly during cylinder filling.  
Part Number: 03240FTA



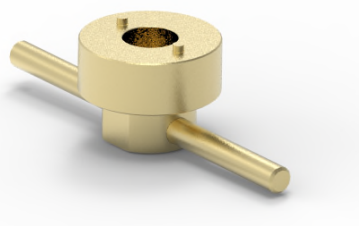
**Filler Bung**  
Used for sealing off secondary port during filling.  
Part Number: 0335000



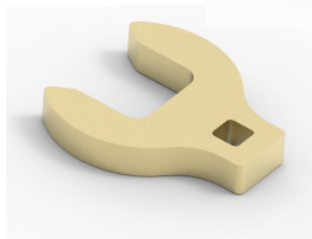
**Transit Plug**  
Fitted to Cylinder Valve for safety and balance if charged cylinder is accidentally discharged prior to coupling to the hose  
Part Number: 19334



**Loading Tool**  
For Loading of GIST Operating Head (03010OHT)  
Part Number: 17854



**Crowsfoot Spanner**  
For installing the cylinder valve  
Part Number: TM3067



## Contact Details:

Leaffield Marine Ltd.,  
9 Atworth Business Park  
Atworth, Wiltshire, UK SN12 8SB

Tel: +44 (0)1225 899550  
Email: [sales@leaffieldmarine.co.uk](mailto:sales@leaffieldmarine.co.uk)  
Website: [www.leaffieldmarine.co.uk](http://www.leaffieldmarine.co.uk)

ISO 9001 Company

**Leaffield  
Marine**

M-08-CI-GIST-02 Rev 01

Quick Connect Coupling  
Connects Inlet Valve (GIVT) to Cylinder Valve  
(GIST) instead of a hose  
Part Number: 18442



Filling Adaptor  
M16 x 1.5 into 3/8" Male Flat Face  
Part Number: 0617000  
Filling Adaptor  
M16 x 1.5 to 0.860" Whitworth  
Part Number: 0333000



**Refer: GENERAL USER MANUAL FOR GAS INFLATION SYSTEM (TORSIONAL)**  
**Document Number: M-07-UM-GIST**

**Contact Details:**

Leaffield Marine Ltd.,  
9 Atworth Business Park  
Atworth, Wiltshire, UK SN12 8SB

Tel: +44 (0)1225 899550  
Email: [sales@leaffieldmarine.co.uk](mailto:sales@leaffieldmarine.co.uk)  
Website: [www.leaffieldmarine.co.uk](http://www.leaffieldmarine.co.uk)

ISO 9001 Company

**Leaffield**  
**Marine**

M-08-CI-GIST-02 Rev 01