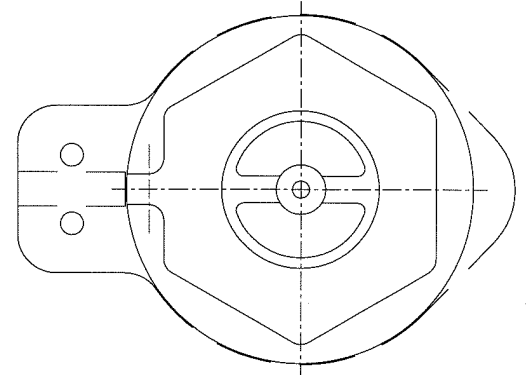


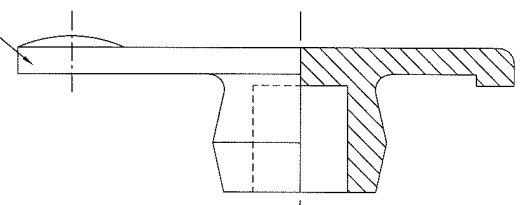
1 SECURITY CLASSIFICATION
UNCLASSIFIED
2 SERVICE DRAWING No./SHT.No.

3rd ANGLE PROJECTION

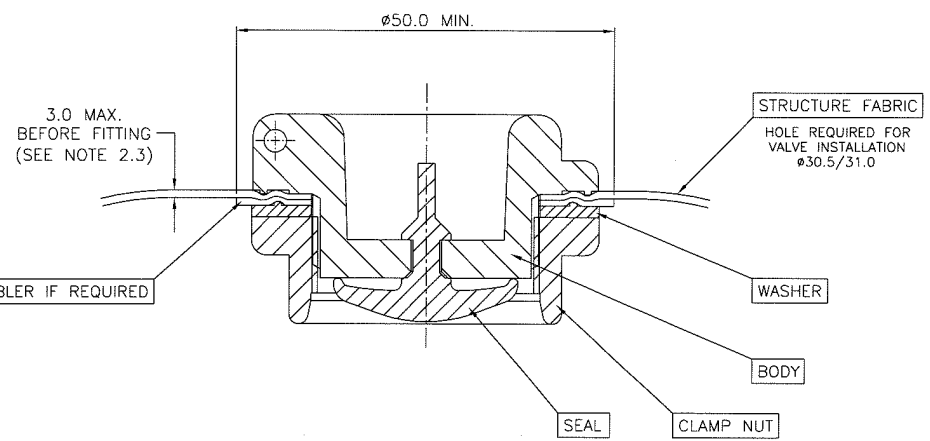
© Leafield Marine Limited 2005
This drawing is protected by Copyright and the information contained therein is the property of LEAFIELD MARINE LTD.
The drawing may not be copied and the information contained therein may not be used or disclosed except with the written permission of and in the manner permitted by LEAFIELD MARINE LTD.



CAP
(INFLATION ONLY)



- 1.0 STORAGE
1.1 Valves must be stored in accordance with BS3574— Recommendations for the Storage of Vulcanised Rubbers
- 2.0 INSTALLATION
2.1 Tightening torque is 16Nm (12lb.ft). Body and Nut are nominally 36mm A.F. It is essential to use a socket spanner to avoid distorting the nut.
2.2 If a thicker fabric is used and pre-fitting thickness exceeds 3.0mm, the tightening torque must be reduced and the assembly has to be tested for its suitability.
2.3 During surface preparation and/or cleaning care must be taken not to degrade the valve.
It is the users responsibility to ensure that the correct process control is employed and that any fluids used during installation or operation are compatible with this valve.
2.4 If it is necessary to clean the valve only use household detergent and warm water. Do not use solvent cleaners.
- For further Information please contact
Leafield Marine Limited



MAXIMUM TUBE DIAMETER: 600mm
MINIMUM TUBE DIAMETER: 150mm
MAXIMUM WORKING PRESSURE: 35kPa (5 PSI APPROX.)

MAXIMUM TUBE DIAMETER IS NORMALLY LIMITED BY THE CONSTRUCTION OF THE INFLATABLE STRUCTURE. WHEN EITHER THE DIAMETER EXCEEDS 600mm (24 INCHES) OR THE PRESSURE EQUALS 35kPa (5 PSI) THE ASSEMBLY REQUIRES TESTING

AutoCAD PRODUCED DRAWING	
SECURITY CLASSIFICATION	UNCLASSIFIED
CONTRACTOR'S DRAWING No.	IS828
SERVICE DRAWING No./SHT.No.	

APPR'D				MATERIAL	TOLERANCE	CONTRACTOR
CERT'D	REDRAWN IN AUTOCAD	04	24/OCT/05			Leafield Marine Limited LEAFIELD CORSHAM WILTSHIRE
CHECKED	10713	03	06/SEPT/05	FINISH	SURFACE ROUGHNESS	TITLE
DRAWN	10064	B	02/APR/02			INSTRUCTION SHEET FOR A8 VALVE INFLATION OR TRANSFER
SRS	CHANGE	A	18/JUL/87	DIMNs. IN mm	SCALE 1:1 ON CAD	

A
B
C
D
E
F
G
A
3